

Bridge To the World : Youth Problem Based Learning Project

*Woojin LEE
Assistant Programme Designer, Team of Education Sector
RCE Tongyeong , Sejahtera Forest*



Regional Centre of
Expertise on Education for
Sustainable Development



What is Bridge To the World

Education for Sustainable Development Problem Based Learning in Tongyeong

**Team
Working**

**Meeting
Listening
Negotiating**

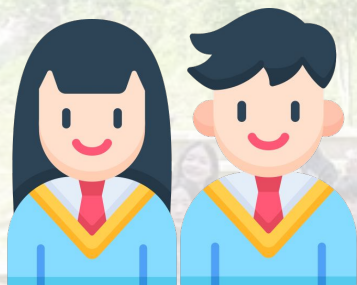
**Critical
Reasoning
and reflection**

**System
Thinking**

**Envisioning
more
Sustainable
Futures**



Bridge To the World Program Statistics



Participants

967

Overseas Activity
Participants

217

Global RCEs
Sister Cities

40

From 2008 to 2024, **967** participants have participated and learned ESD
217 students visited **40** global RCEs and Tongyeong sister cities



Bridge To the World Annual Curriculum

Application

**Visit RCE Cities
next year, January**



- Observing the Local Area
- On-site Visit
- Sharing Observations

- Listing Local Problems
- Selecting a Problem
- Seeking Advice & Feedback
- Analyzing Problem Causes
- **(What is real Problem)**
- Problem Definition & Presentation

- Visualizing Solutions
- Researching & Developing Solutions
- Planning Execution
- Reviewing the Plan

- Executing the Project
- Presenting Results
- Identifying Improvements
- Planning Future Steps
- Visiting RCE Cities
- Visiting Cities in Korea
- Wrapping Up Team Activities



세자트라숲
Sejahtera Forest
RCE Tongyeong

The 15th Bridge To the World : Summary

Main Theme

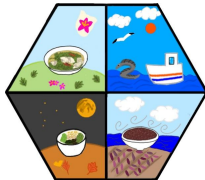
***Tongyeong Youth,
Think Globally·Act Locally!***

Participants

6 Team · 32 Participants
*(Middle School Students 6
· High School Students 26)*



Daebak-Jing-jo



6 Can Do It



Blue Earth



Infinite



**We are Fourth
Team**



**Solve the
Problem**



Visiting RCE Cities 2024

Daebak-Jing-jo

S.T.P How to spread fair trade in Tongyeong?



Japan, RCE Chubu

How to spread fair trade in Tongyeong?

How can we effectively raise awareness of intangible cultural heritage in Tongyeong?

**Cultural Exchange
Intangible Heritage**

Indonesia
Bogor

Jakarta

6 can do it



Thailand, RCE Trang

How can we preserve and promote traditional Tongyeong cuisine?

**Cooking Class
Trang Cuisine Exploration
School Visit**

Punchline How to minimize discarded clothing generated in Tongyeong?

Sandwich How to reduce disposable plastics in Tongyeong?

Australia
Sydney

Upgrade How to reduce night pollution caused by neon signs in Tongyeong?

How to incorporate a sustainable lifestyle into daily lives?

Renaissance How to turn Tongyeong into an eco-friendly premium city?

Bravo How to keep Tongyeong's streets clean?

HP7 How to create a barrier-free city of Tongyeong?

Blue Earth



Malaysia, 3 RCE Cities

How can we create an ESD program in Tongyeong that appeals to youth?

**ESD practices in schools and civil society
Mangrove planting**



Post-Visit Implementation: Study Trip to RCE cities in the world

How can we **make an ESD program that appeals to Tongyeong youth?**

- 1 Discovering the Problem:** Identified the lack of appeal in current ESD programs for Tongyeong students in schools.
- 2 Making the Solution:** Developed the "Earthling MBTI" to make sustainability education more engaging and fun.
- 3 Learning from the World:** Integrated lessons from Malaysia's three RCEs on their local-level movements.
- 4 Localizing the Impact:** Highlighted local sustainability risks to make the content more relevant to Tongyeong youth.
- 5 Implementing the Vision:** Planned to include the Earthling MBTI in textbooks, incorporating real-life SDG scenarios.





Post-Visit Implementation: Domestic Study Trip

How can we **engage Tongyeong youth in creating a sustainable marine ecosystem?**

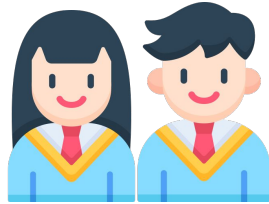
- 1 Discovering the Gap:** Recognized that despite the daily beauty of Tongyeong sea, marine litter remains a severe issue.
- 2 Making the Solution:** Planned a plogging initiative for youth to actively and consistently protect Tongyeong's ocean.
- 3 Learning from the World:** Explored Jeju and Busan, discovering organizations dedicated to marine conservation.
- 4 Localizing the Impact:** Identified local activities in Tongyeong that also work towards protecting the sea.
- 5 Implementing the Vision:** Developing a kit and designing a process for ongoing student-level efforts.





Impact and Insights from the Program

Quantitative Data



90%

of students reported an increased understanding of Tongyeong

90%

of students realized that their local actions can positively impact the world

Qualitative Insights and Experiences

- **Life-Changing Moments**
Experiences that served as turning points in life
- **Increased Confidence**
Boost in self-confidence
- **New Perspective on the World**
Direct experience of the world beyond media
- **Desire for Self-Improvement**
Increased desire to become a better person
- **Love for Tongyeong**
Enhanced affection and understanding of TY
- **Enjoyment in Problem-Solving**
Pleasure in identifying and solving problems
- **Cooperation**
Improved ability to work effectively with others
- **Diligence**
Enhanced commitment and reliability in tasks

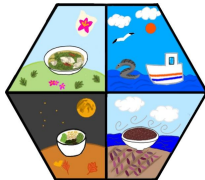


Lesson Learnt

*What truly matters is not just solving problems for a sustainable future, but the **journey of working together, exploring new places, and understanding local issues.** By getting to know and love our local area, we also learn to love the world and the Earth itself. The effort to address these challenges is as valuable as the solutions, fostering resilience and creativity. This process of learning builds the strength needed to face the demands of creating a sustainable future. These experiences will continue to provide strength, inspiration, and a deeper sense of purpose as we navigate the complexities of the world.*



Daebak-Jing-jo



6 Can Do It



Blue Earth



Infinite



We are Fourth Team



Solve the Problem



The 16th Bridge To the World: Overview

Tongyeong Youth, find sustainable happiness



Questions & Collaboration



Woojin LEE
tyrce.wjlee@gmail.com

동영
바이브
투포함

Thank you!



Woojin LEE
tyrce.wjlee@gmail.com

